

CT DEEP **2016**
FISHING REPORT NUMBER 27
10/14/2016



Kokanee (*Oncorhynchus nerka*)



YOU CAN FIND US DIRECTLY ON FACEBOOK. This page features a variety of information on fishing, hunting, and wildlife watching in Connecticut. The address is www.facebook.com/CTFishandWildlife.



INLAND REPORT

Fall Stocking of Trout and Broodstock Atlantic Salmon: No State Stocking has occurred this week (as of time of distribution). Conditions (especially water temperatures) are improving slowly allowing for trout and salmon to be stocked on a case-by-case basis (hopefully widespread stocking soon). We are monitoring conditions in your favorite lakes, ponds, rivers, and streams. As soon as we can get the fish out – we will. Stay tuned to our Facebook page for daily stocking updates.

LARGEMOUTH BASS fishing is reported as fair to good. Places to try include East Twin Lake, Wononskopomuc Lake, Burr Pond, Hatch Pond, Tyler Lake, Congamond Lakes, Candlewood Lake, Lake Housatonic, Lake Lillinonah, Highland Lake, Bantam Lake, Lake Saltonstall, Winchester Lake, Billings Lake, Stateline Pond, Griggs Pond, Dog Pond, Bigelow Pond, Stillwater Lake, Halls Pond, Quaddick Reservoir, Silver Lake (Meriden), Red Cedar Lake and Mudge Pond.

Tournament angler no report this week

SMALLMOUTH BASS action reported at West Hill Pond, Bantam Lake, Candlewood Lake and Highland Lake. River smallies are providing some action on the Housatonic River (Upper), Quinebaug River and Naugatuck River.

Tournament angler no report this week

CARP- Medium size carp (15-22 pounds) are being landed from Enfield to Haddam in the CT River. Other carp hot spots include; Lake Housatonic, Housatonic River (New Milford), Quinebaug River (Jewitt City), and Batterson Park Pond. Follow the leaders at <http://www.carptournamentseries.com/site/>

WALLEYE- Look for deep drop offs and structure. For some action try Squantz Pond, Batterson Park



A nice 20" male Kokanee salmon trapped from West Hill Pond. Each fall fisheries staff collect broodstock and bring them to Burlington State Fish Hatchery to spawn. The fry are returned to West Hill Pond in the spring.



Pavel "Paul" Hastik of Florida hooks up with what proved to be a 22-pound Common Carp. Since his smallest of his top 4 was over 26 pounds, this fish did not help to elevate his standings. The 100-hour tournament on the CT River ends Friday at 2 pm.

Pond, Beach Pond, Mashapaug Lake, Gardner Lake, Mount Tom Pond, Lake Saltonstall, West Thompson Reservoir, Saugatuck Reservoir or Lake Zoar.

NORTHERN PIKE Look for pike fishing to really pick up with the cooler weather moving in. Places to try include Bantam Lake, Lake Lillinonah, Mansfield Hollow Reservoir, Quaddick Reservoir, Pachaug Pond, Hopeville Pond and Winchester Lake.

BLACK CRAPPIE fishing is picking up with reports of fish coming from Lake Saltonstall, Roseland Lake, South Spectacle Lake, and Park Pond.

TROUT- FALL TROUT STOCKING UPDATE: Conditions are improving slowly allowing for some trout to be stocked on a case-by-case basis (hopefully widespread stocking may be possible soon). Stay tuned to our Facebook page and website for daily stocking updates.

RIVERS & STREAMS - Conditions are starting to improve. Temperatures are dropping, but the lack of significant rain continues to keep many streams near record low flow levels (see stream flow graphic on page 5).

Farmington River – Fishing continues to be good and the conditions for this weekend should be good. The Farmington River Anglers Association stocked 1,200 fish total on 10/6/2016 (a mix of Brooks and Browns with a few Tigers) in the upper part of the West Branch. Flows are clear and very low, currently 60 CFS at Riverton with the Still River adding a mere 6.9 CFS, and water temperatures are in the upper 50's°F.

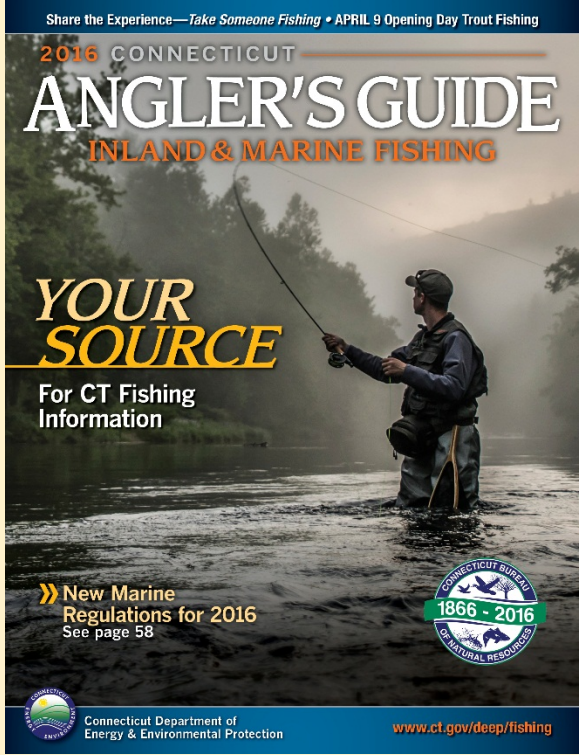
Hatches/patterns include *Isonychia* (#12-14, parachute style), Blue Wing Olives (#18, 22-24, mid-late afternoon), Caddis (tan #16-18, all day; brown #16-18), Midges (#20-32, morning), and Rusty Spinner (#14-20, mornings). White Wooly Buggers, Muddlers, Micky Finn, or Grey or Black Ghosts (#4-10) are standard streamers. Bottom bouncing nymphs with Caddis pupa (#14-16), Serendipity (#14-16), Prince (#6-18) and Hare's ear (#8-20) works well.

Housatonic River –Flows are very low, clear and easily wadeable, currently 85 CFS at Falls Village and 120 CFS at Gaylordsville). Morning water temperatures are currently in the low 60's °F.

The area between the Route 4 bridge and Route 341 bridge is still offering great fishing with smallmouth and fallfish eagerly hitting a variety of poppers, dry flies, nymphs, and streamers.

Patterns to try include **Blue Wing Olive** (#18-24, early morning; spinner fall in evening), *Isonychia* (#10-12 evening), Midges (#20-24) and caddis (#14-18, early morning & evening). Also try terrestrial patterns such as Black and Cinnamon Ants (#16-18, midday, when breezy) and large streamers, or nymphing the pockets, deeper riffles and pool heads.

TROUT-LAKES & PONDS - Trout Parks (Black Rock, Thomaston, Wharton Brook, Wallingford, Great Hollow, Monroe, Mohegan Park Pond, Norwich, Schreeder Pond, Killingworth, Valley Falls Park Pond, Vernon, and



Share the Experience—Take Someone Fishing • APRIL 9 Opening Day Trout Fishing

2016 CONNECTICUT

ANGLER'S GUIDE

INLAND & MARINE FISHING

YOUR SOURCE

For CT Fishing Information

» New Marine Regulations for 2016 See page 58

CONNECTICUT BUREAU OF NATURAL RESOURCES 1866 - 2016

Connecticut Department of Energy & Environmental Protection www.ct.gov/deep/fishing

Only a few weeks left to get your best “shot” into the Angler’s Guide Cover contest. Email your high quality photo to: deep.inland.fisheries@ct.gov by November 1.

Day Pond, Colchester.) were stocked with 300 Rainbow Trout each last week. These fish are very nice size at about 1 pound each. Please remember that the daily limit is 2 fish per person per DAY.

BROODSTOCK ATLANTIC SALMON: 500 fish were stocked into each of the following; Mount Tom Pond and Crystal Lake (Ellington) last week. The daily limit in lakes and ponds is 1 fish per angler. Stocking of the Naugatuck and Shetucket Rivers is on hold until the water level increases.

CONNECTICUT RIVER

The River remains very low (making fishing in some places very difficult). Results from an electrofishing survey conducted this week indicate that the fishery in the Haddam section is **ROBUST**, lots of slab **CRAPPIE**, Big **BOWFIN**, and good numbers of **PIKE** and **BASS**. Fish the weedlines for big predators. **BLACK CRAPPIE** action is improving in the coves up and down the river. Target the backwaters with small shiners, silver grubs, or small Rapalas. **SMALLMOUTH BASS** have been reported as hit or miss in from Hartford upstream. **NORTHERN PIKE** fishing is reported as good in the main stem and coves. Fish have been caught from the Hartford area downstream to Chapman Pond. **LARGEMOUTH BASS** are being caught (also hit or miss) in the Hartford to Haddam area. **CARP** are providing action in coves and in the mainstem (Hartford to Middletown area). Fishing for the CARP tournament began on October 10 and will end Friday at 2:00 pm. Lots of impressive fish being caught. Get out and support your fellow CARP-ers.

NOTES & NOTICES:

BASHAN LAKE (drawdown). Bashan Lake remains drawn down (slow refill continues – lake currently remains down approximately 4-5 feet – note that refill rate is dependent on rainfall amounts) following dam repairs and the state boat launch remains closed.

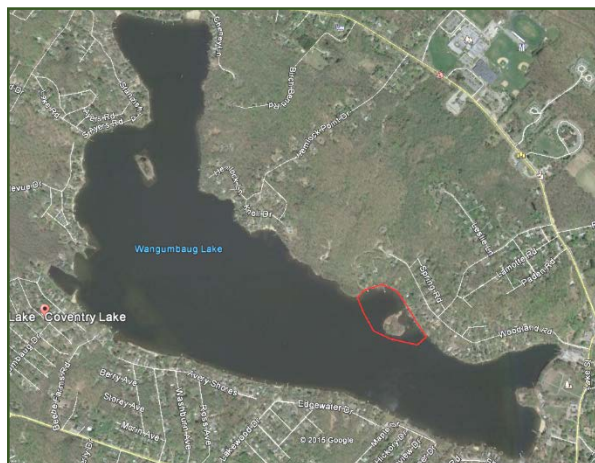
BRANFORD RIVER (boat launch). The Branford River state boat launch is currently closed for renovations. This closure is currently expected to last to November 14, 2016. Alternative nearby launch sites include the Guilford Town boat launch and the East River State boat launch, both in Guilford.

COLEBROOK RIVER LAKE (boat launch). Due to low water levels the **regular boat launch at Colebrook River Lake is closed**, however, an alternate location to launch from is available and can be used. Boaters should use extra care when launching and when out on the lake (remember that submerged objects such as tree stumps and rocks are much closer to the surface due to water levels). Boaters can call the U.S. Army Corps of Engineers (USACE) at 860-379-8234 for updated information.

CONNECTICUT RIVER (invasive species alert). *Hydrilla* was recently found in the main stem Connecticut River in Glastonbury (near Glastonbury's riverfront Park & Boathouse). See the Coventry Lake entry below for what river users should do to prevent spread of this invasive plant to other waterbodies.

COVENTRY LAKE (invasive species alert). *Hydrilla*, a very highly invasive aquatic plant, has been found growing in Coventry Lake. All lake users should take extra care to check and clean their boats (including canoes, kayaks and rowing sculls), trailers, and fishing equipment before leaving the boat launch, or leaving the lakeshore.

Coventry Lake (Wangumbaug Lake) boaters should avoid the area outlined in red to avoid fragmenting and spreading hydrilla. This is only area in the lake where hydrilla has been found.



DOOLEY POND (drawdown). A drawdown of Dooley Pond to facilitate dam repairs is ongoing (repairs are done, but refill rate will be dependent on rainfall). The state boat launch is currently closed.

GLASGO POND (drawdown). A drawdown of Glasgo Pond to facilitate dam repairs is ongoing (began September 2015). Launching of boats is difficult to impossible.

HANOVER POND (drawdown). A 6-foot drawdown of Hannover Pond (Quinnipiac River, Meriden) began on September 13 for the purposes of installing a small hydropower facility. The drawdown is likely to extend through the upcoming winter months. This pond has extensive shallow areas that are now exposed.

LAKE HOUSATONIC (rowing regatta). The “Head of the Housatonic” Regatta is scheduled for **Saturday, October 8th from 8 am to 6 pm, with course setup occurring on Friday, October 7th**. Although this event will be using the boat launch in Indian Well State Park, room will be available to the general public to launch. Boaters should however use additional caution on the lake.

SILVER LAKE (canoe/kayak race). A canoe/kayak race event is scheduled for Saturday, October 15, from 10:00 am through 12:30 pm. Boaters should use extra caution during the event (the course laps the lake along the shoreline).

UPCOMING DRAWDOWNS. **Lake Zoar** is scheduled for a drawdown from October 28 to November 6, **Lake Lillinonah** is scheduled for a drawdown from November 7 to November 16, and the winter drawdown of **Highland Lake** is scheduled to start in early November.

PHOTO CONTEST: Do you have the next Angler’s Guide cover shot? Email us your high quality (high resolution) photos at Deep.inland.fisheries@ct.gov and include [photo contest](#) in the subject line. Deadline is November 1, 2016

CT FISHIN’ TIPS is our monthly e-newsletter dedicated to providing information, tips and pointers about fishing in Connecticut. Get CT Fishin’ Tips delivered automatically to your in box by subscribing at www.ct.gov/deep/newslettersubscription

NEW! Youth Fishing Passport [Fishing Challenge Scorecard](#): Download the new scorecard for your Youth Fishing Passport Holder on the program web page at www.ct.gov/deep/yfp. Top anglers will receive a great prize pack of fishing gear.

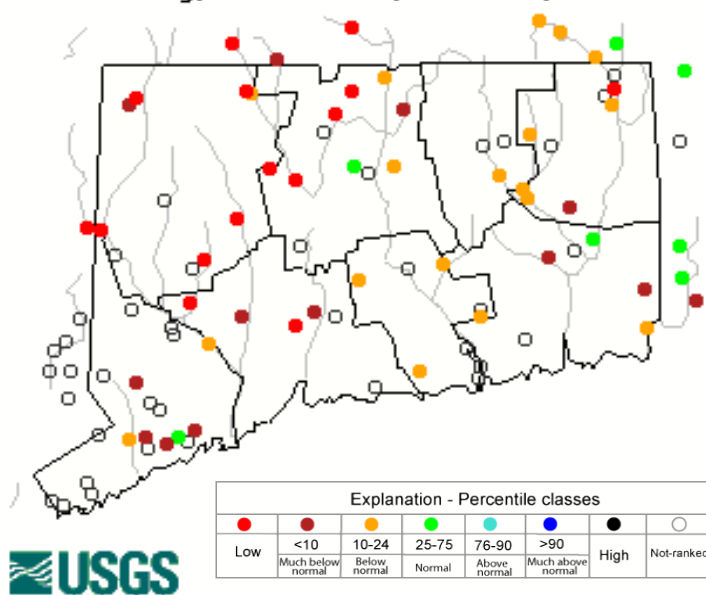
¡VOMONAS A PESCAR! Información disponible en español relacionada con la pesca en Connecticut.

Los folletos de la pesca en [aguas dulces](#) y [aguas saladas](#) fueron traducidos en español para la distribución a la comunidad hispana residentes en Connecticut. El objetivo de los folletos de pesca en español es para ayudar a fomentar, aumentar y promover la participación hispana en esta actividad que se lleva acabo en familia.

Somos afortunados en Connecticut por el gran abastecimiento de peses . La población de Connecticut tiene oportunidad de pescar a no más de 5 millas de su residencia. Si a usted le gusta la Trucha, Lobina, Lucio Norteamericano, Panfish o especies de aguas saladas como Lobina Rayada, Summer Flounder, Porgy o Anjova, las aguas de Connecticut lo ofrecen. ¡Vamonos a Pescar!

Stream flow

Friday, October 14, 2016 00:30ET



Data in the state graphic to the left are generated by the United States Geologic Survey (USGS) and are available on line at: <http://waterdata.usgs.gov/ct/nwis/rt>
 A percentile is a value on a scale of one hundred that indicates the percent of data in the data set equal to or below it. For example streamflow greater than the 75th percentile means only ¼ of the streamflow values were above the value and thus would be considered “above normal”. Stream flow between the 25th and 50th are considered to be “normal flows” and those 25th or less are considered to be “below normal”.

MARINE FISHING REPORT



Surface water temperatures in Long Island Sound (LIS) are in the low 60's °F. Check out the following web sites for more detailed water temperatures and marine boating conditions:

<http://www.mysound.uconn.edu/stationstat.html>

http://marine.rutgers.edu/mrs/sat_data/?nothumbs=1

<http://www.ndbc.noaa.gov/>

<http://www.wunderground.com/MAR/AN/330.html>

NEW SHARK REGULATIONS – EFFECTIVE MONDAY, AUGUST 22, 2016: An Atlantic Highly Migratory Species (HMS) permit is required to take, possess, or land any shark species, other than smooth or spiny dogfish, in this state.

To obtain an HMS permit visit: <http://www.greateratlantic.fisheries.noaa.gov/aps/permits/> or call NMFS Customer Service Center at (888) 872-8862. CT Marine anglers may encounter Sand Tiger and Sandbar (Brown) Shark which are protected and prohibited species and they must be released unharmed. **IF YOU DON'T KNOW, PLEASE LET IT GO!** [Coastal shark information](#).

Connecticut State Boundary Line in Long Island Sound. Anglers please note: Though Connecticut has reciprocity with neighboring states (New York, Rhode Island, Maine and Massachusetts), residents of Connecticut are required to have a CT Resident Marine Waters Sport Fishing License to fish in the Marine District.

WHALES AND SEALS - see check [WHALE WATCHING GUIDELINES](#). All marine mammals are protected by the Federal Marine Mammal Protection Act. Following these recommended operational guidelines helps minimize chances of harassing or injuring whales and violating Federal law. Guidelines apply to all large whales from Maine through Virginia, except North Atlantic right whales. It is illegal to approach a right whale within 500 yards (1500 feet) unless granted specific exemption or authorization.

TAUTOG (Blackfish) fishing is fantastic throughout LIS! Shallow water (less than 30 ft) rocky reefs, rock piles, and wrecks have been producing great tog fishing action. As the water temperatures drop, tog will move off into deeper water. Any of the rocky reefs, rock piles, and wrecks in LIS will hold tog. Green, Asian or Hermit Crabs will work. Consider putting the crab (bait) on a jig (1/4 to 1 ounce). It will be a shallow water bite (6-30 feet) for a while. I would highly recommend planning a trip on a party/charter boat trip to fish for tautogs.

STRIPED BASS fishing is very good around the "Hunters" full moon. It is time for shore anglers to hit the SURF, especially at coastal state parks. The fall season is starting strong, with many shore anglers catching bass on top water at Enhanced Shore Fishing Opportunities. These bass are migrating and feeding heavily on all the bait. You can have great success during the daytime, especially under overcast skies. The top water technique has produced some very big bass recently (49 inches – 41 pounds, (DEEP Marine Headquarters, Old Lyme). Striper spots include the Watch Hill reefs, Ram Island Reef in Fishers Island Sound, lower Mystic and Thames River, the Race, Sluiceway, Plum Gut, Pigeon Rip, outer Bartlett Reef, Black Point, the "humps" south of Hatchett Reef, lower Connecticut River, Long Sand Shoal, Cornfield Point, Southwest Reef (outer), Sixmile Reef, Falkner Island area, the reefs off Branford, New Haven Harbor (Breakwalls) and the upper reaches, Charles Island area, lower Housatonic River, buoys 18 and 20 off Stratford Point, Stratford Shoal/Middle Ground, Milford Point, Penfield Reef, around the Norwalk Islands, and Cable and Anchor Reef.

STRIPED BASS ANGLERS FISHING IN RHODE ISLAND WATERS - are advised that the state of Rhode Island has adopted the following regulations pertaining to striped bass. These regulations apply to all Rhode Island state lands and waters including the waters around Block Island: **"Any person recreationally harvesting a striped bass thirty-four (34) inches or larger shall at the time of harvest have the right pectoral fin removed at a point as close to the body of the fish as possible."**

BLUEFISH fishing is very, very good. Throw a top water plug/popper and hang on. They can be found throughout the Sound (find the birds). Still a lot of bluefish cruising the lower estuaries, rivers and beaches feeding on menhaden/anchovies. Bluefish fishing spots include the reefs off Watch Hill, the Race, Thames River, Sluiceway, Plum Gut, Pigeon Rip, lower Connecticut River, Long Sand Shoal, Sixmile Reef, Falkner Island area, New Haven Harbor and upper reaches, lower Housatonic River, buoys 18 and 20 off Stratford Point, Stratford Shoal/Middleground, Penfield Reef, Norwalk Islands and Cable and Anchor Reef.

SNAPPER fishing is still better in the western sound (Milford to Greenwich) with fish measuring 5 to 12 inches in length.

BLACK SEA BASS fishing is improving daily. Hit every favorite wreck/reef/hump, to find good numbers of these tasty bottom fish. Angler please be careful when releasing sublegal sea bass. There is lots of them out there, let us give them a chance to grow and get big. A reminder to all anglers, if you are fishing in water deeper than 100', barotrauma can cause released fish to struggle to make it back to the bottom. A descending device such as the Shelton Fish Descender can help assist the sea bass air bladder to recompress and get safely back down to the depths. See Fishsmart.org for more information.

SUMMER FLOUNDER (fluke) fishing is **Closed** in CT

SCUP (porgy) fishing remains very good throughout the Sound. Party/Charter boats are still targeting them...that is how plentiful they are. Hit the coastal state parks (especially around high tide) and spend time chumming...this will improve your success. Try these nice shore fishing areas (incoming tide better); Morningside, and Woodmont (Milford), Coast Guard Jetty at Southport Beach, Rick Jetty at Calf Pasture beach, South Benson Fishing Pier, Sherwood Island, Pleasure Beach Fishing Pier, St Mary's by the Sea, Gulf Beach Pier, Bonds Dock (Stratford) and Stratford wall along with Long Beach (excellent shore spots). Other shore spots include The Sound School Fishing Pier/Dock, Rocky Neck State Park, Harkness Memorial State Park, Meigs Point, Hammonasset, Sherwood Island State Park, Charles Island and Fort Trumbull State Park. Locate your favorite Enhanced Shore Fishing Opportunities for these hard fighting and excellent eating "Reef Slammers".

ATLANTIC BONITO & LITTLE TUNNY continues to be red hot throughout the sound. Pink and green is the color of choice. Many anglers are scoring using a Hogy heavy minnow jig in pink. Shore anglers are scoring at Fort Trumbull, mouth of the Thames River, Ocean Beach, Seaside Park, Harkness Memorial, Hammonasset State Park, Rocky Neck State Park. In the west try Compo Beach, Sherwood Island, Burying Hill Beach (Fairfield), Southport Harbor, Shady Beach/ Calf Pasture (Norwalk) and Fayerweather Island in Bridgeport along with Long Beach Stratford. Dawn and dusk is typically the best time to fish for these inshore tunas but they can be caught during the daytime. They are feeding heavily of young of the year transparent juvenile anchovy. Try casting metal (heavy) lures (Swedish pimple, albie snax and Epoxy jigs) to feeding fish on the surface. A quiet approach and finding birds (gulls/terns) actively feeding is the key to a successful trip. Jigging (1.5oz crippled herring) for them also works when they are close to the bottom and your fish fonder is "lit up".

WEAKFISH fishing is surprisingly good in the central and western sound. Falkner and Goose Island area is producing some very nice "tide runners". Many scup/seabass anglers are catching them while bottom fishing. Fish up to 26 inches are being reported from West Haven Beaches/Charles Island area to Norwalk. Also, look for weakfish in Guilford/Madison/New Haven Harbor areas.

HICKORY SHAD fishing is fair to good in the lower Connecticut River (DEEP Marine Headquarters fishing pier), Lieutenant River, and Black Hall River. Also, the Mystic and Niantic Rivers are spots worth trying.

STRIPED SEA ROBIN fishing is FANTASTIC. "Poor-Man's Lobster" are found wherever one is saltwater fishing. Great fishing from shore...with many fish measuring over 17 inches and barking up a storm (grunting noise they make when handling them). They love sandworms, squid and any live or dead bait. They are also very good to eat. Please be careful when handling them...be mindful of their spines located on top of their head and gill cover.

GOT A FISHING REPORT - PLEASE EMAIL US AT deep.marine.fisheries@ct.gov

NOTABLE CATCHES:

CAUGHT A TROPHY FISH? - TROPHY FISH AWARD PROGRAM AFFIDAVIT link

Species	Length (in.)	Weight (lb)	Angler
Bluefish	33"	-	Fred Spadaccini
Bluefish	35.5"	-	Fred Spadaccini
Bluefish	34"	-	Fred Spadaccini
Bluefish	36.25"	-	Dean Michael Vogel
Bluefish	37.5"	-	Dean Michael Vogel
Scup	17"	-	John Mallinson

For Current Connecticut Recreational Fishing Regulations: Anglers should consult the 2016 Connecticut Anglers Guide which is now available at most Town Clerks Offices, DEEP offices and at tackle stores selling fishing licenses. Current regulations, electronic versions of the Angler's Guide and additional information can all be accessed on the DEEP website at: www.ct.gov/deep/fishing.

The Connecticut Department of Energy and Environmental Protection is an Affirmative Action/Equal Opportunity Employer that is committed to complying with the requirements of the Americans with Disabilities Act. Please contact us at (860) 418-5910 or deep.accommodations@ct.gov if you have a disability and need a communication aid or service; have limited proficiency in English and may need information in another language; or if you wish to file an ADA or Title VI discrimination complaint.

DEEP WEEKLY Fishing Report



**Connecticut Department of
ENERGY & ENVIRONMENTAL PROTECTION**
79 Elm Street, Hartford, CT 06106
www.ct.gov/deep

Striped Bass image courtesy Duane Raver/USFWS.